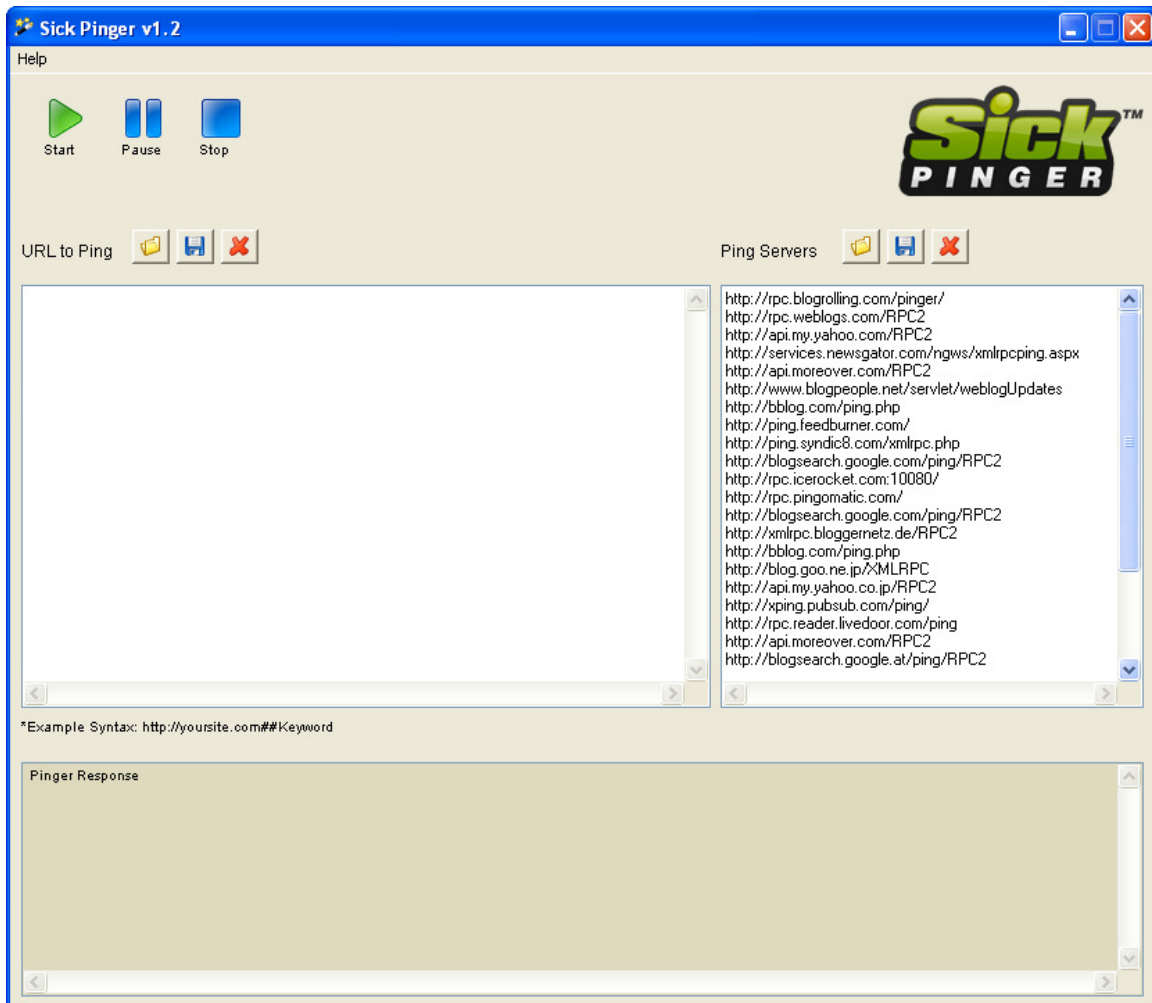


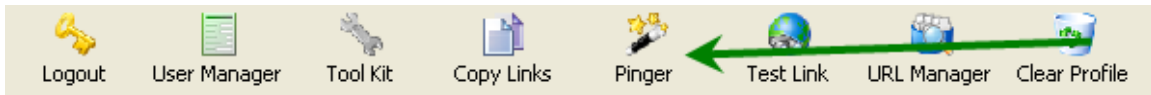
# Sick Pinger

## Documentation

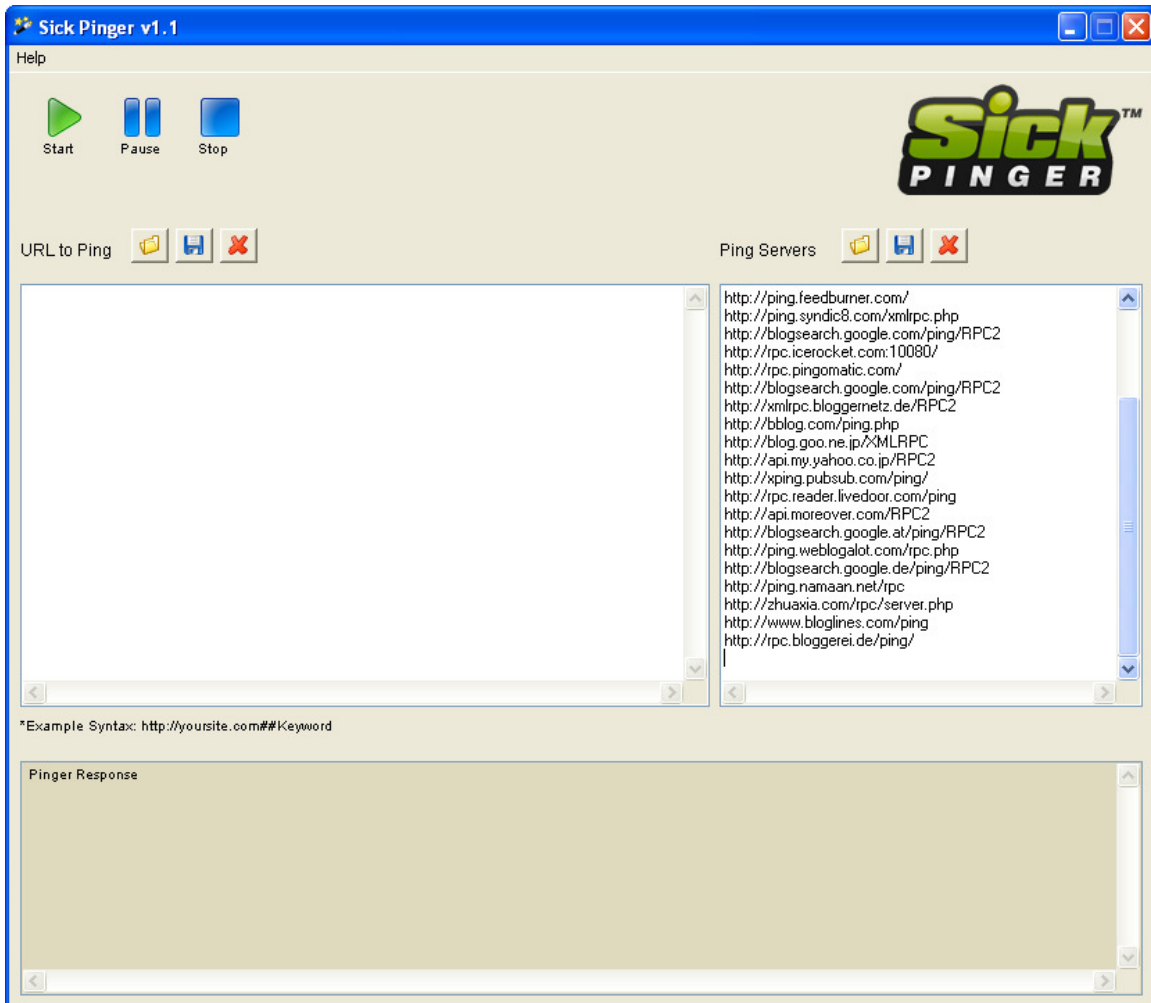


## The Sick Pinger

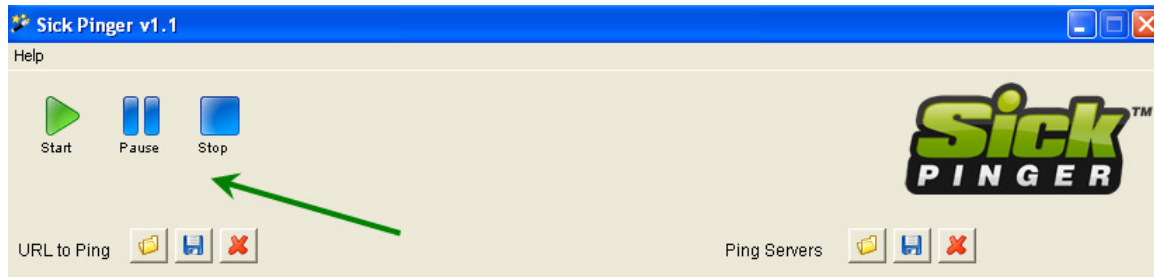
The sick Pinger is accessed by clicking the pinger button in the Profile Maker tool bar.



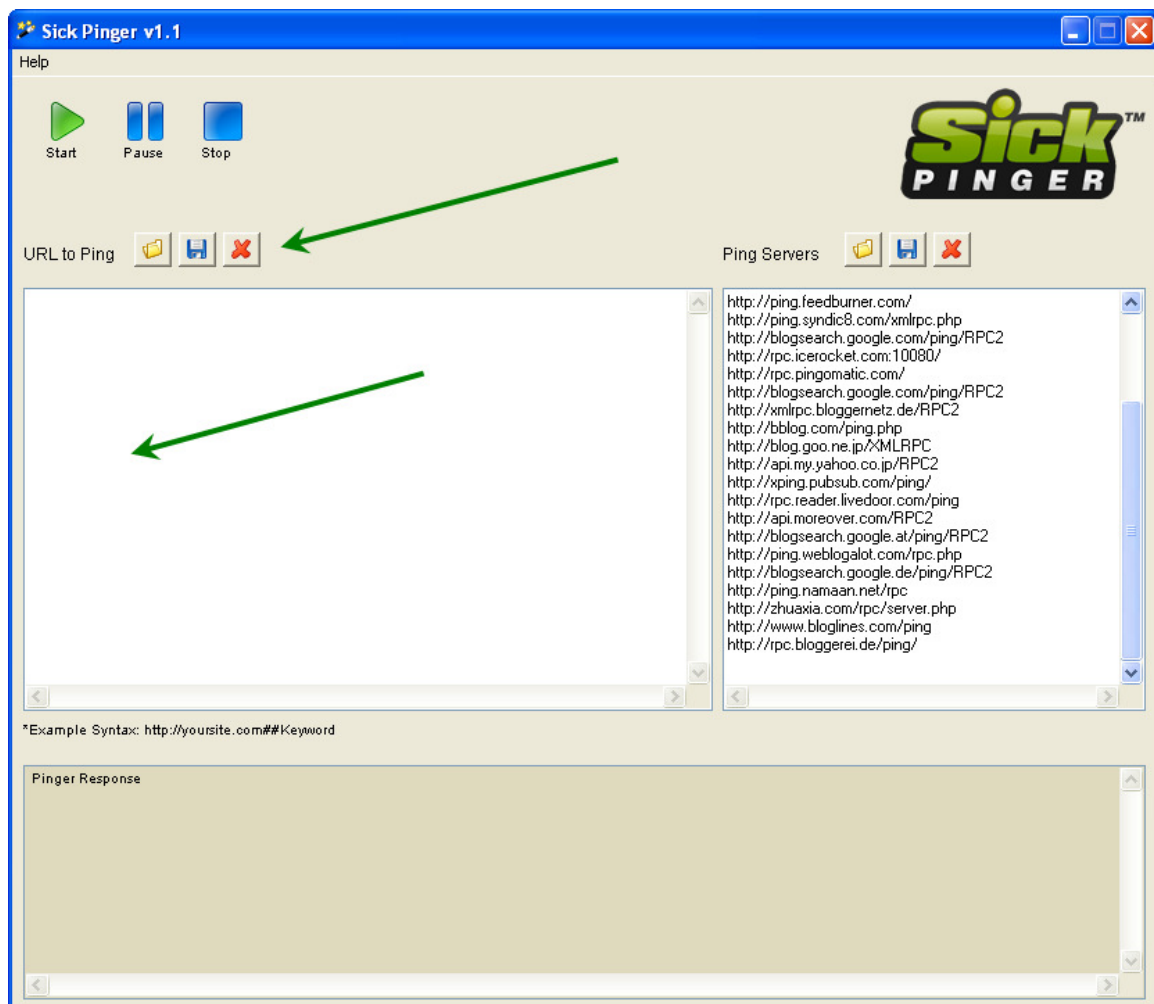
Once launched the Sick pinger will submit your newly created profiles (or any other web sites/pages) to about 30 RPC Ping services.



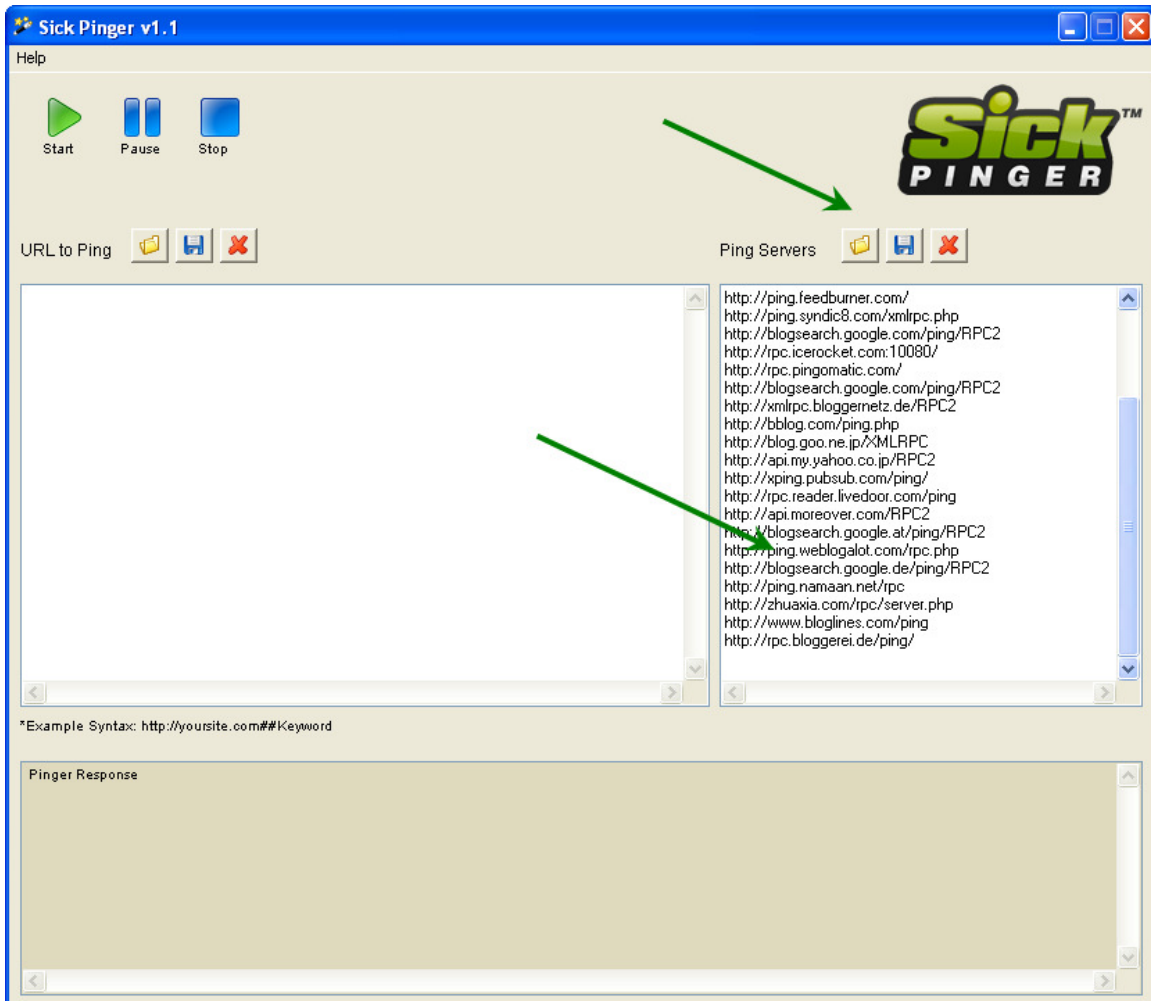
To start, stop or pause the Sick Pinger, use the start, stop and pause buttons as you would on a CD/DVD player.



URLs can be auto loaded from Profile Maker, or you can use the Sick Pinger for any other sites. The open, save, and clear list icons will work to import, save, or remove URLs from the URL list to ping. You can also type in the URLs by hand in the open box.



The same icons above the Ping Server list can also be used to open/import your own ping servers, save the current list of ping servers, or clear the list of ping server. You also have the option of typing in your own ping servers by hand.



You can watch the ping responses in the window at the bottom to see how many servers are successful and if any fail.

