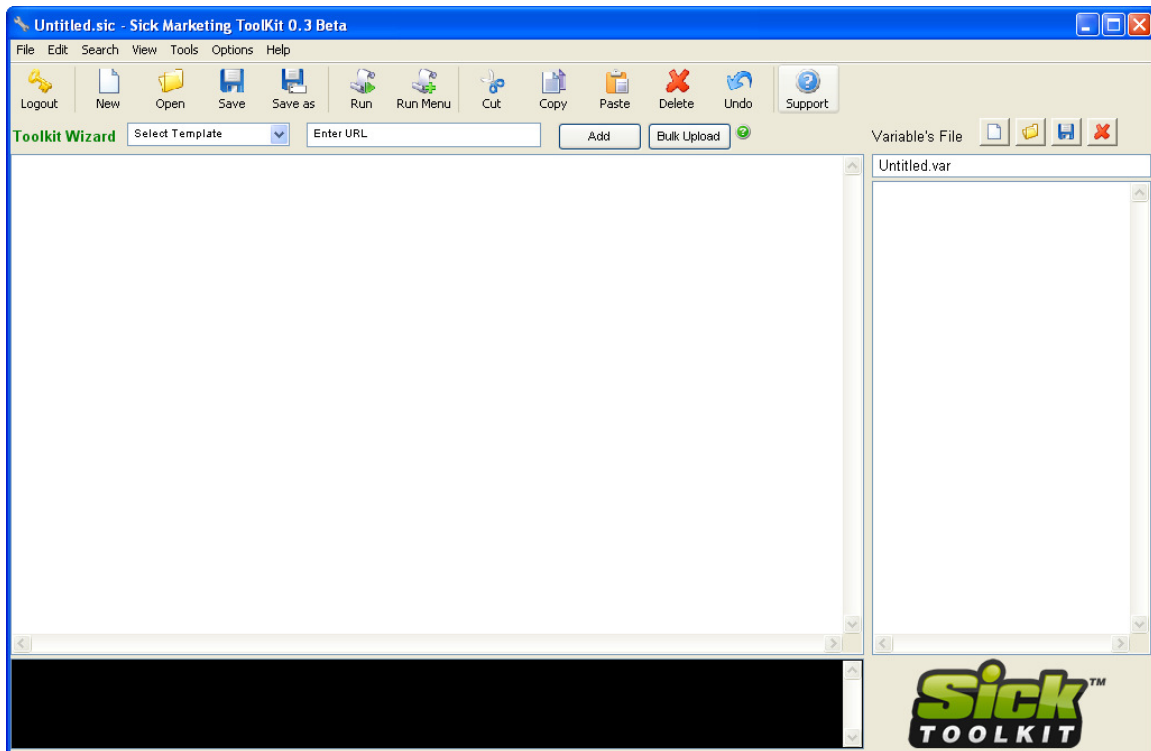


Sick Builder

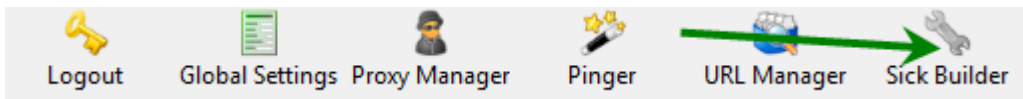
Documentation



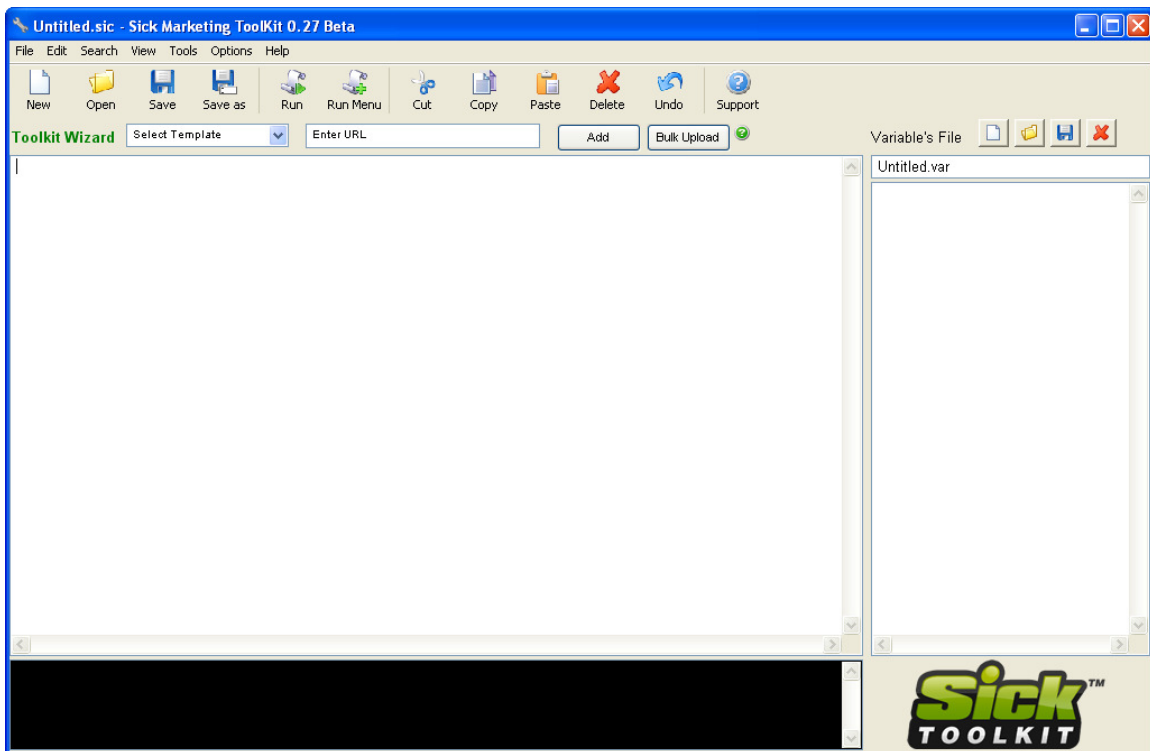
The Sick Builder

The Sick Builder is a platform which will enable you to edit Sick scripts or create your own site scripts.

The Sick Builder requires a valid license to Sick Submitter. To access the Sick Builder click the Sick Builder Icon.



Site scripts are written in a language we refer to as .Sic. Once the builder is opened you have several options.



As with any code based editor you have your normal options as explained below.

New – Opens a new file to code a script.

Open – Opens an existing file to modify.

Save – Saves changes to existing script.

Save as – Saves existing script as a new name to preserve the original file.

Run – Runs the script as Sick Profile Maker would to test functionality.

Run Menu – Displays a step menu with execute commands and IE Options.

Cut – Cuts the highlighted code or text.

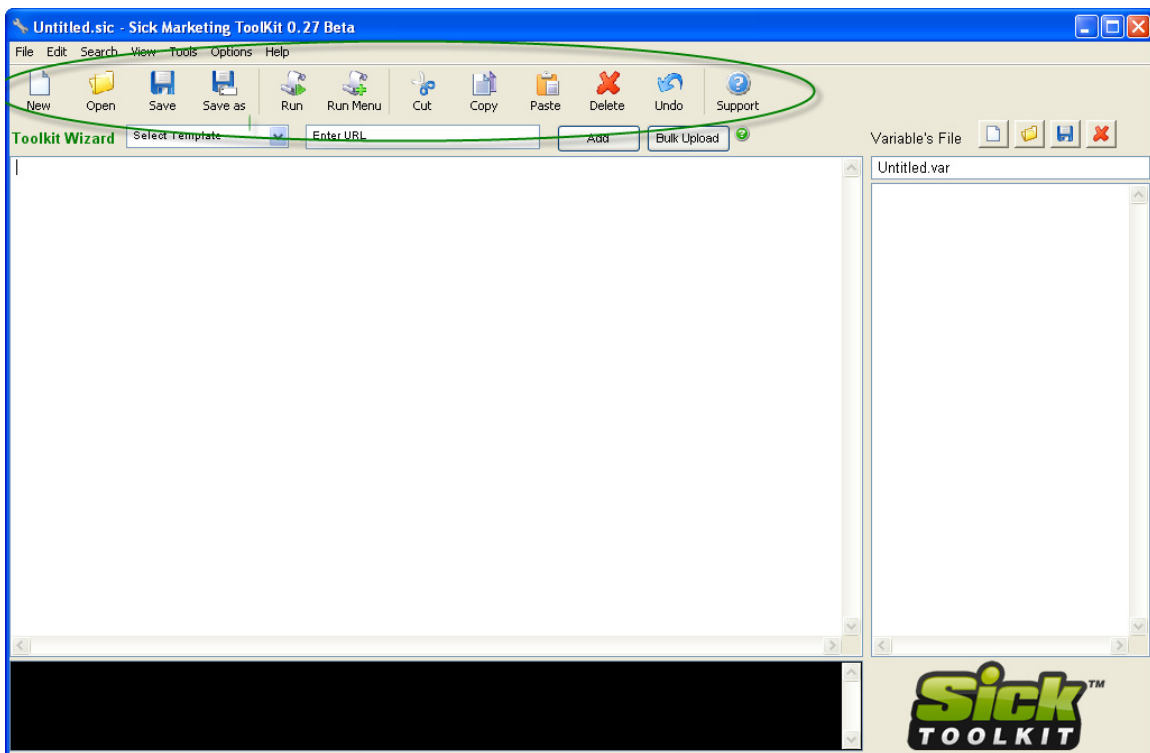
Copy – Copies the highlighted code or text.

Paste – Pastes the cut or copied code or text.

Delete – Deletes the highlighted code or text.

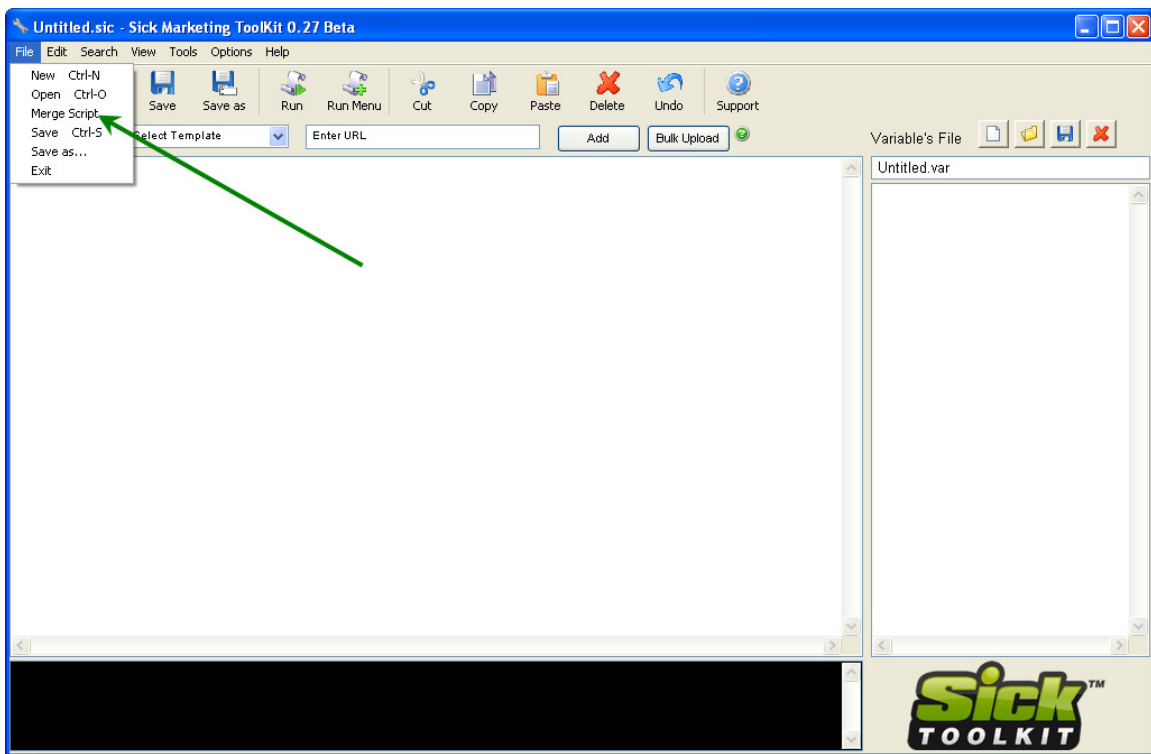
Undo – Reverses last step completed.

Support – Opens an IE browser to the Sick Builder support forum

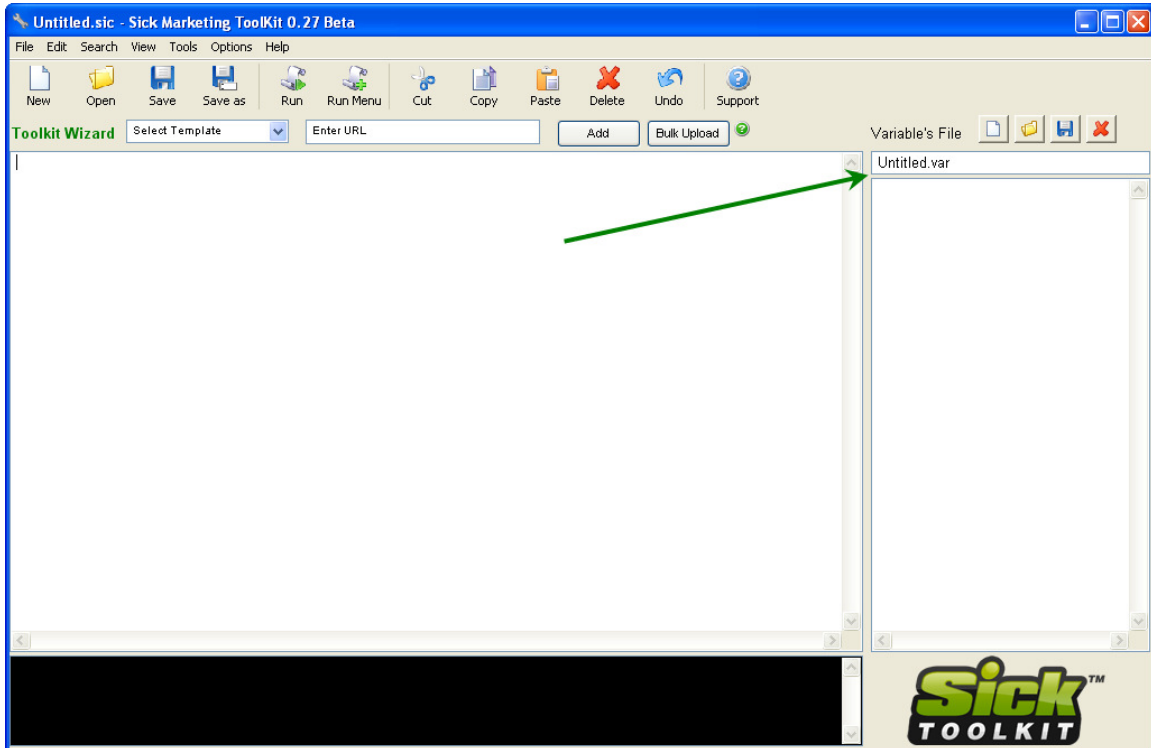


A feature many users find helpful, and that requires no coding knowledge is our merge script function. Using the merge function you can merge multiple scripts to create a giant list of sites you can create profiles on.

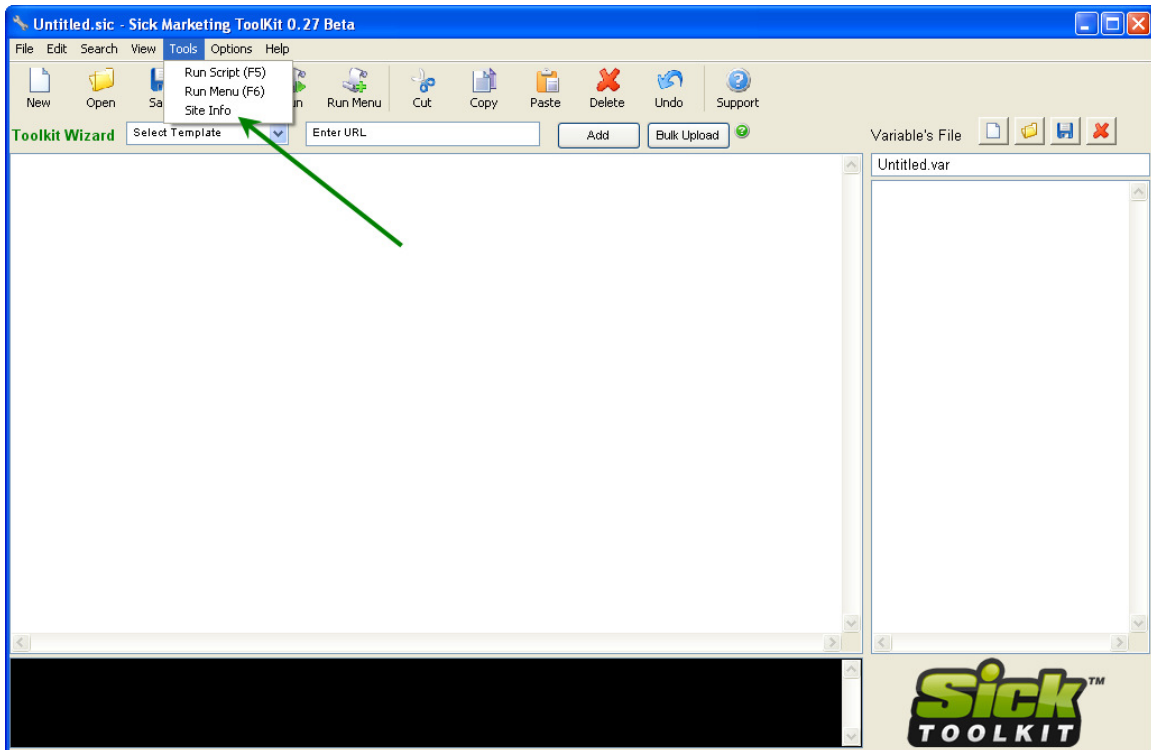
To use this feature open an existing script by clicking on the File/Open button and selecting a script. Next click the File/Merge Script option and choose the script you wish to merge. When finished click file, and Save as and give your new script a name.



The variable window will open a Var file (profile file) and show you which variables are in use and available for each profile. Profiles and variable information will vary for each profile created based on the information you enter.



Adding your own site or site list to the .Sic framework.
Begin by clicking the Tools drop down. Then select Site info.

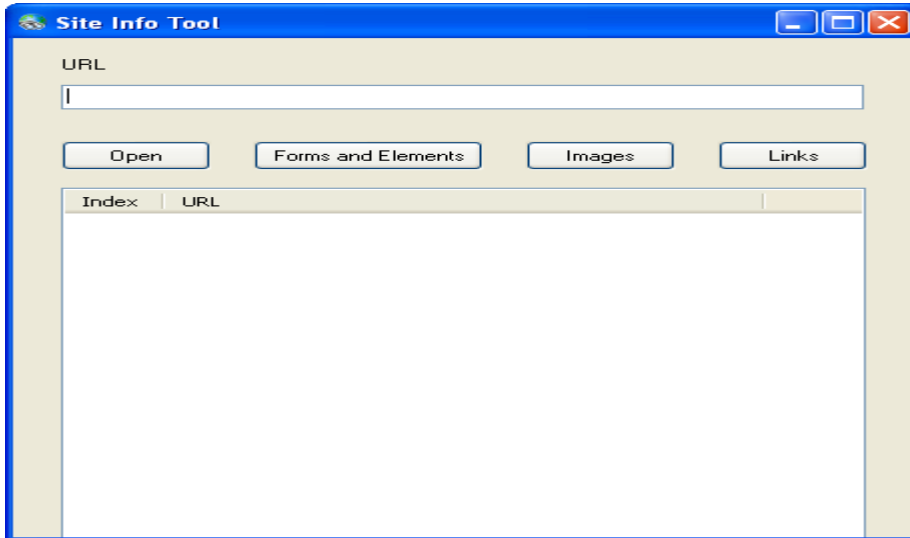


Note: Never name your Packet or Template the same as a Default name (months/years)

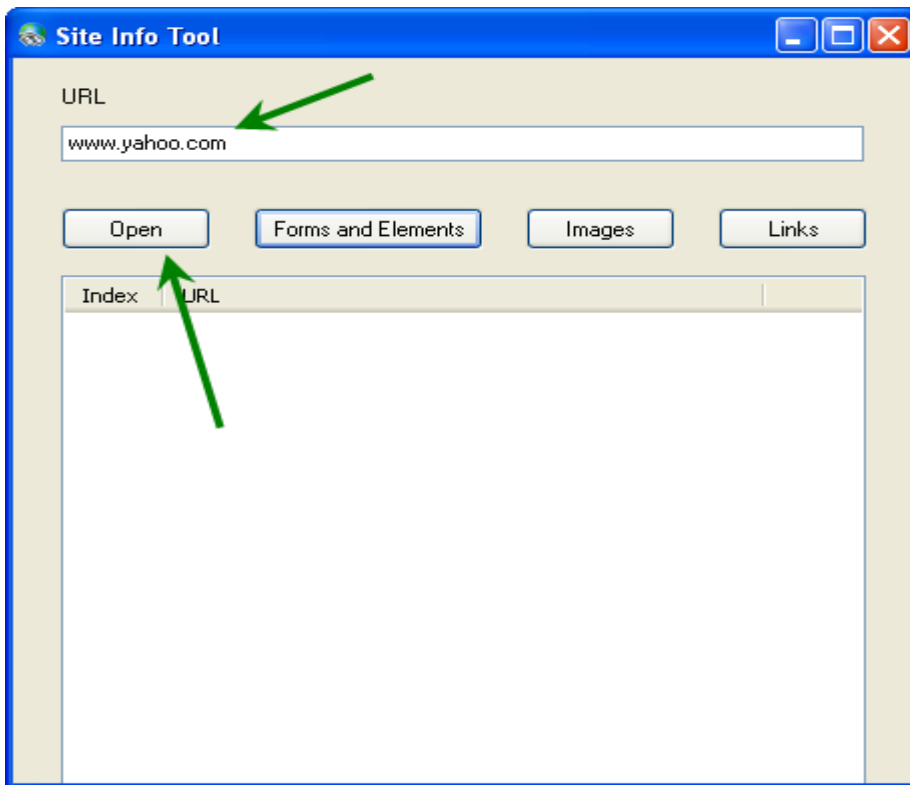
Please be sure to give all your packets their own unique name.

If you name it the same thing as one of the defaults we add their is a **very good chance** that it will be overridden on an upgrade often without warning!

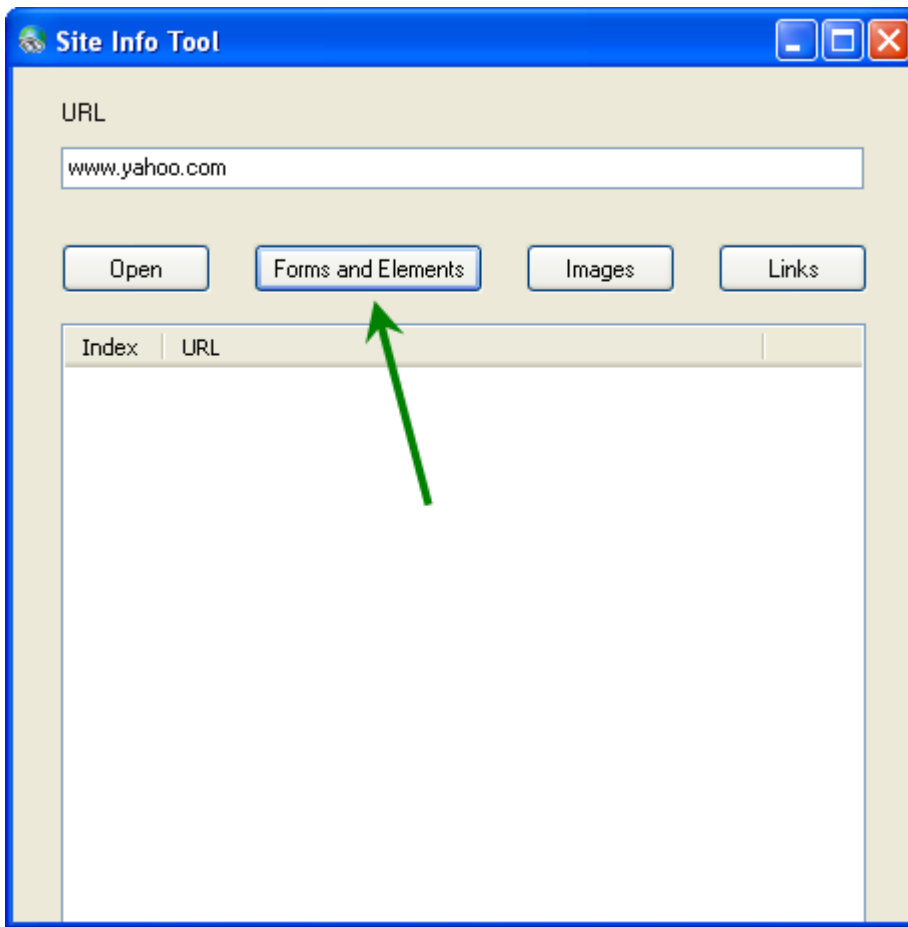
The Site info tool will appear.



Add your URL, and click the Open button.



Once IE opens the new browser window click the Forms and Elements button.



If you now look at your IE window, you will see information in the form elements now.

The image shows a screenshot of the Yahoo! homepage in Internet Explorer. The search box at the top right contains the text 'F:0 E:1', with a green arrow pointing to it. Below the search box, the page displays the date 'TODAY - March 27, 2010' and a featured article titled 'Pop star Ke\$ha's wacky wizard coat'. Below the article, there are several news snippets, including 'Divers search for 46 missing of sunken S. Korean ship' and 'Tea Party heads to Searchlight; targets Reid, health care'. At the bottom of the page, there is a market data section showing 'Markets: Dow: 10,850.00 0.08% Nasdaq: 395.10 -0.10%'. Below the market data, there are two buttons with IDs 'F:1 E:0' and 'F:1 E:1', with green arrows pointing to them. The page also features a sidebar with 'MY FAVORITES' and 'RECOMMENDED' sections.

This element information can be used to identify Element numbers which can be used in place of form names example would be the Search box here can be identified as F:0 E:0 Or Form 0, Element 0. While this does make things a little easier for users not familiar with HTML, the downside is that if an additional input box is added, it could change all of your element numbers. This would obviously break your form automation. If you look at the bottom of the image, the elements are F:1 E:0 so it is a new form.

Clicking the Images button will identify all images, and clicking the links button will identify all links. These can also be helpful for coding images into your .Sic code (captchas) and links for ClickLink or ClickURL functions.

